

### FEATURE

- . Small compression load cell
- . Applied to narrow spaces
- . Protection class : IP67

### SPECIFICATION

MODEL	CMNC
Rated capacity (R.C.)	50, 100, 200, 500kgf, 1, 2, 5, 10, 20tf
Rated output (R.O.)	2.0 ± 0.02 mV/V
Zero balance	0 ± 0.1 mV/V
Combined error	0.15% R.O.
Repeatability	0.05% R.O.
Creep for 30 min	0.03% R.O.
Temp. effect on zero value	0.05% / 10°C
Temp. effect on output value	0.01% / 10°C
Excitation recommended	10V DC
Excitation maximum	15V DC
Terminal resistance, input	420 ± 50Ω
Terminal resistance, output	350 ± 3.5Ω
Insulation resistance	>2000MΩ @ 50V DC
Compensated temperature range	-10 to +40°C
Operating temperature range	-20 to +80°C

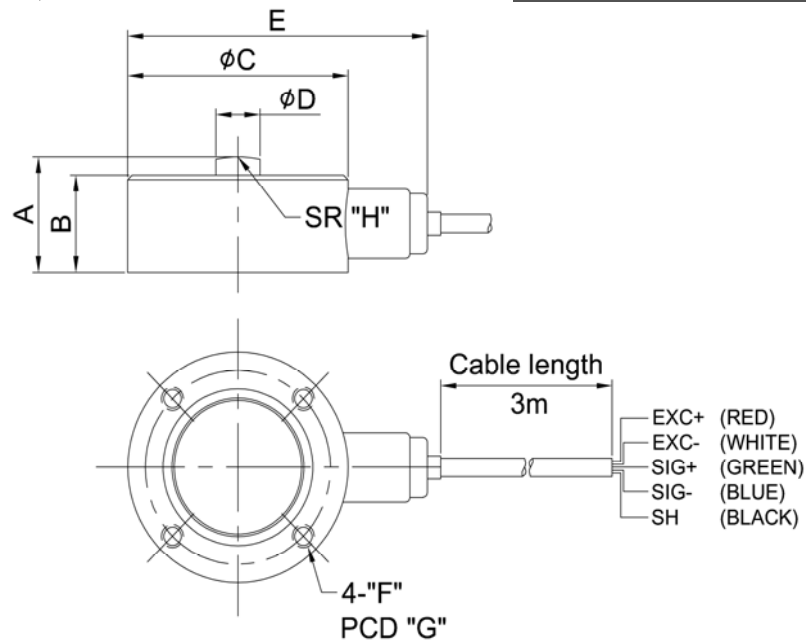


#### ◆ Material

Stainless steel (50kgf~2tf)  
Paint finished steel (5tf ~ 20tf)

#### ◆ Cable

Braided Shield 4-wire round cable  
with PVC-jacket



### DIMENSION (mm)

Rated Capacity	A	B	φC	φD	E	F	G	H
50, 100, 200, 500kgf	25	21	50	10	65	M5 x 0.8 DP7	42	50
1, 2tf	25	21	50	10	65	M5 x 0.8 DP7	42	50
5tf	40	35	98	20	113	M6 x 1.0 DP8	72	150
10tf	45	40	98	20	113	M6 x 1.0 DP8	72	150
20tf	50	45	118	20	132	M8 x 1.25 DP10	90	250