

### FEATURE

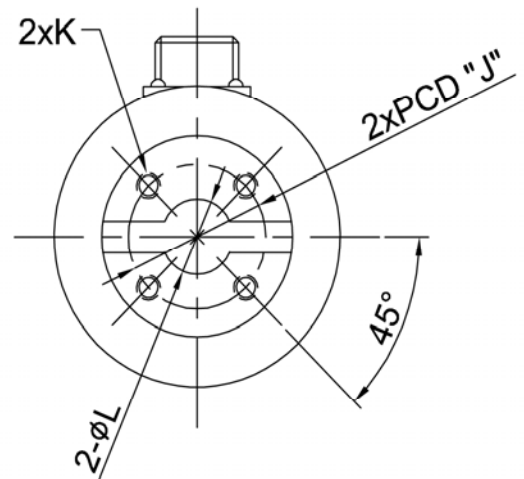
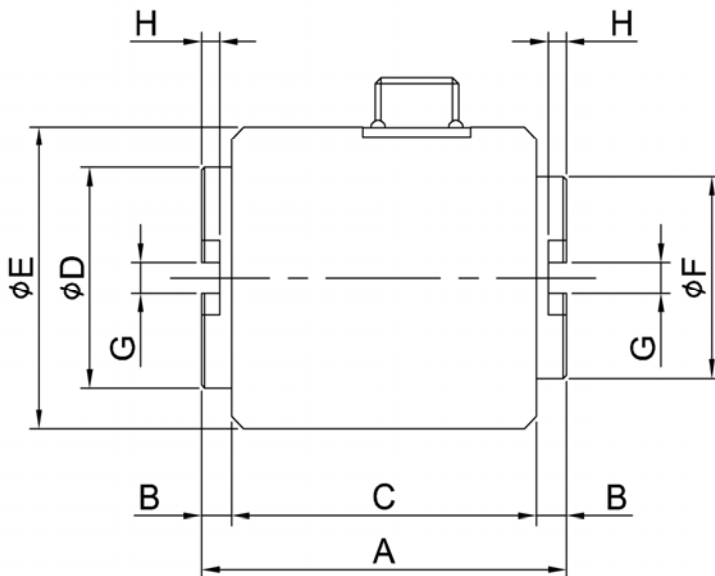
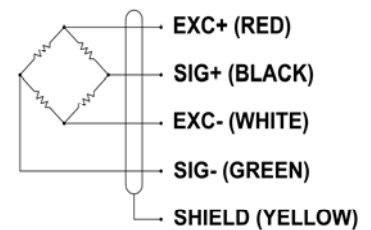
- . Flange type reaction torque sensor
- . Compact design and easy to install
- . Torque measurement in stationary equipment or within 0-90 degree angle
- . Torque measurement for product breaking test, reducer, various actuator

### SPECIFICATION

| MODEL                        | TNN                                      |
|------------------------------|--|
| Rated capacity (R.C.)        | 20, 50, 100, 200, 500, 1000, 2000 kgf·cm |
| Rated output (R.O.)          | 1.5 ± 0.4mV/V                            |
| Non-linearity                | ≤ 0.3% R.O.                              |
| Hysteresis                   | ≤ 0.3% R.O.                              |
| Non-repeatability            | ≤ 0.3% R.O.                              |
| Terminal resistance, input   | 350Ω ± 1%                                |
| Terminal resistance, output  | 350Ω ± 1%                                |
| Insulation resistance        | > 1000MΩ @ 30V DC                        |
| Temp. effect on rated output | ≤ 0.1% LOAD/10 °C                        |
| Temp. effect on zero balance | ≤ 0.1% R.O./10 °C                        |
| Temp. range compensated      | -10 to 60 °C                             |
| Excitation Voltage           | 5V, 10V DC                               |
| Safe overload                | 150% R.C.                                |
| Cable                        | φ7 shield 5m                             |



### WIRING INFORMATION



### DIMENSION (mm)

| Rated Capacity     | A  | B | C  | φD | φE | φF | G | H   | J    | K              | φL |
|--------------------|----|---|----|----|----|----|---|-----|------|----------------|----|
| 20, 50, 100 kgf·cm | 54 | 4 | 46 | 26 | 38 | 23 | 4 | 2.5 | 16.5 | 4-M3 TAP DP 7  | 8  |
| 200, 500 kgf·cm    | 61 | 5 | 51 | 35 | 48 | 32 | 5 | 3   | 23   | 4-M4 TAP DP 10 | 12 |
| 1000, 2000 kgf·cm  | 70 | 6 | 58 | 45 | 58 | 42 | 6 | 3.5 | 30   | 4-M5 TAP DP 10 | 15 |