

### FEATURE

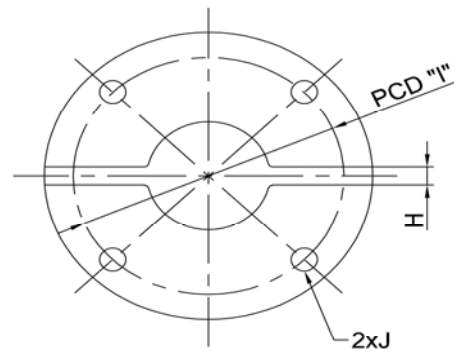
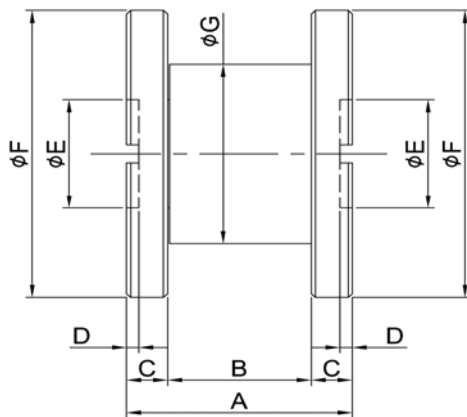
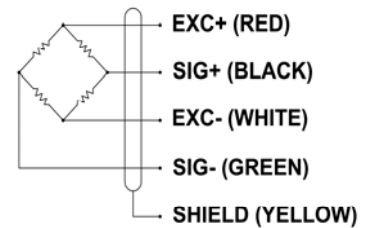
- . Flange type reaction torque sensor
- . Compact design and easy to install
- . Torque measurement in stationary equipment or within 0-90 degree angle
- . Torque measurement for product breaking test, reducer, various actuator
- . Customizable : 1000kgf.m, 2000kgf.m

### SPECIFICATION

MODEL	TFF
Rated capacity (R.C.)	50, 100, 200, 500, 1000, 2000, 5000, 10000, 20000, 50000 kgf.cm
Rated output (R.O.)	1.5 ± 0.4mV/V
Non-linearity	≤ 0.3% R.O.
Hysteresis	≤ 0.3% R.O.
Non-repeatability	≤ 0.3% R.O.
Terminal resistance, input	350Ω ± 1%
Terminal resistance, output	350Ω ± 1%
Insulation resistance	> 1000MΩ @30V DC
Temp. effect on rated output	≤ 0.1% LOAD/10°C
Temp. effect on zero balance	≤ 0.1% R.O./10°C
Temp. range compensated	-10 to 60°C
Excitation Voltage	5V, 10V DC
Safe overload	150% R.C.
Cable	φ7 shield 5m



### WIRING INFORMATION



### DIMENSION (mm)

Rated Capacity	A	B	C	D	φE	φF	φG	H	I	J
10, 20, 50kgf·cm	55	35	10	3	30	80	50	5	66	4-φ6.5
100, 200kgf·cm	55	35	10	3	30	80	50	5	66	4-φ6.5
500, 1000kgf·cm	55	35	10	3	30	80	50	5	66	4-φ6.5
2000kgf·cm	80	50	15	3	40	98	50	10	78	6-φ10.5
5000kgf·cm	120	80	20	5	60	118	75	12	95	6-φ10.5
10000kgf·cm	130	90	20	6	60	146	75	16	115	6-φ14
20000kgf·cm	140	90	25	7.5	60	166	88	20	130	6-φ18
50000kgf·cm	170	100	35	10	80	197	98	28	155	6-φ20