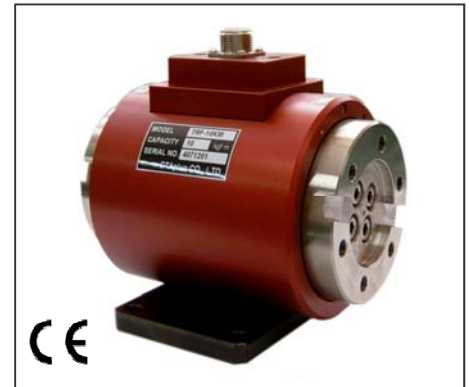


### FEATURE

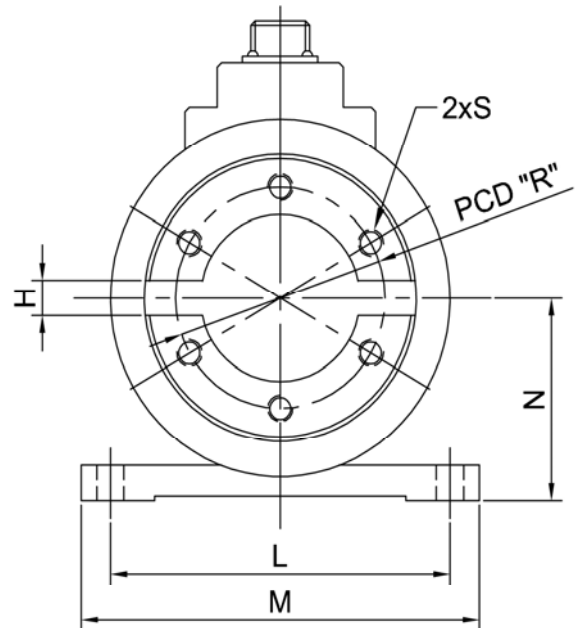
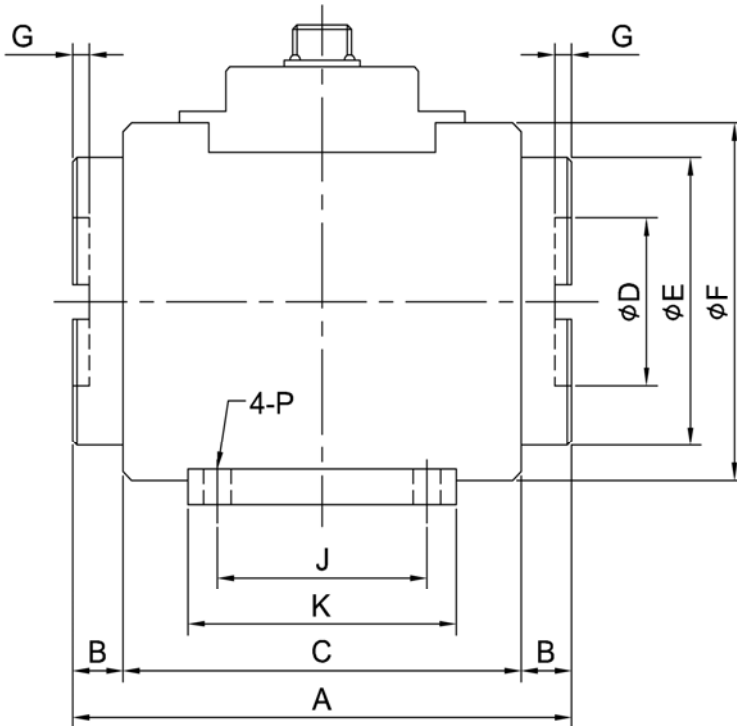
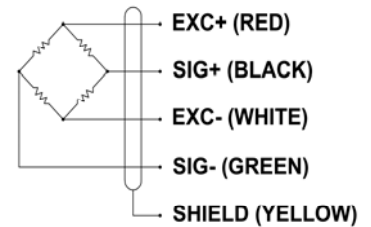
- . Flange type rotary torque sensor
- . Static and dynamic torque measurement of rotating equipment
- . Torque measurement at automobile parts production line, stirrer, bolt tightening force

### SPECIFICATION

MODEL	TRF
Rated capacity (R.C.)	5, 10, 20kgf.m
Rated output (R.O.)	1.5 ± 0.4mV/V
Non-linearity	≤ 0.3% R.O.
Hysteresis	≤ 0.3% R.O.
Non-repeatability	≤ 0.3% R.O.
Terminal resistance, input	350Ω ± 1%
Terminal resistance, output	350Ω ± 1%
Insulation resistance	> 1000MΩ @ 30V DC
Temp. effect on rated output	≤ 0.1% LOAD/10°C
Temp. effect on zero balance	≤ 0.1% R.O./10°C
Temp. range compensated	-10 to +60°C
Excitation Voltage	5V, 10V DC
Safe overload	150% R.C.
Cable	φ7 shield 5m



### WIRING INFORMATION



### DIMENSION (mm)

Rated Capacity	A	B	C	φD	φE	φF	G	H	J	K	L	M	N	φP	φR	S
5, 10, 20kgf·m	119	12	95	38	65	81	2.5	8	50	64	81	95	46	6.5	50	6-M6 DP15