

### FEATURE

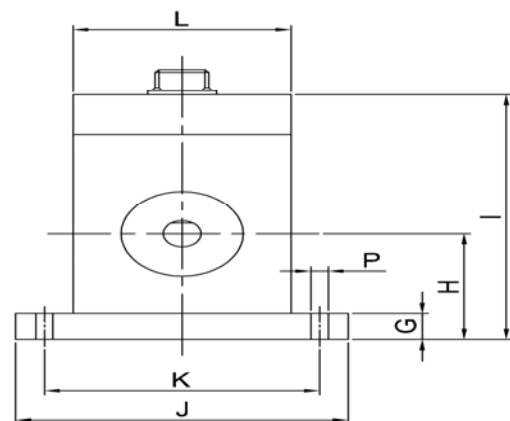
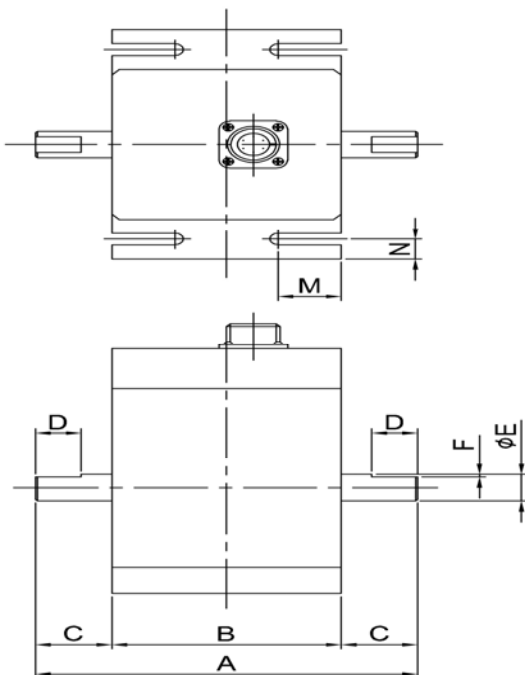
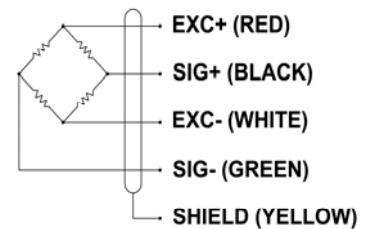
- . Shaft-Type Rotary Contact Torque Sensor
- . Static, dynamic torque measurement of rotating equipment
- . Compact design with micro torque measurement
- . Torque measurement of motor load test, bolt clamping force, spring, hinge etc

### SPECIFICATION

MODEL	TCS
Rated capacity (R.C.)	5, 10, 20, 50, 100, 200, 500, 1000 kgf·cm
Rated output (R.O.)	1.5 ± 0.4mV/V (5,10KC : 1.0±0.2mV/V)
Non-linearity	≤ 0.3% R.O.
Hysteresis	≤ 0.3% R.O.
Non-repeatability	≤ 0.3% R.O.
Terminal resistance, input	350Ω ± 1%
Terminal resistance, output	350Ω ± 1%
Insulation resistance	> 1000MΩ @30V DC
Temp. effect on rated output	≤ 0.1% LOAD/10°C
Temp. effect on zero balance	≤ 0.1% R.O./10°C
Temp. range compensated	-10 to 60°C
Excitation Voltage	5V,10V DC
Safe overload	150% R.C.
Cable	φ7 shield 5m



### WIRING INFORMATION



### DIMENSION (mm)

Rated Capacity	A	B	C	D	φE	F	G	H	I	J	K	L	M	N	P
5, 10kgf·cm	96	60	18	12	8	1	10	40	92.5	87	72	57	16.5	7.5	4.5
20, 50 kgf·cm	100	60	20	12	10	1	10	40	92.5	87	72	57	16.5	7.5	4.5
100, 200kgf·cm	120	76	22	15	18	5x5	10	40	92.5	87	72	57	20	7.5	4.5
500, 1000kgf·cm	146	76	35	20	20	6x6	10	40	92.5	97	82	67	20	7.5	5.5